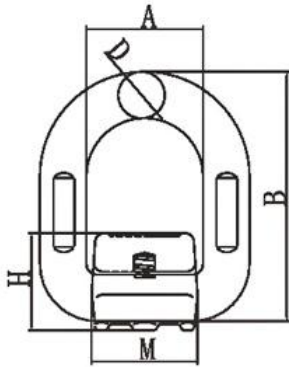


Weld D Link

- Forged with super alloy steel.
- Innovative design has more advantages,the rated load is increased by about 50%.
- Welding and installation are fast and convenient.
- The design is compact and the shape is beautiful.
- Forged ring should be according to DIN 1677 80 grade,100% magnaflux crack detection.
- Welding seat material is Q345.



| Model | Weight Kg | WLL T | Size (mm) | | | | |
|-----------|--------------|----------|-------------|------|------|-------|-------|
| | | | A±1 | B±2 | D±1 | M±1.2 | H±0.3 |
| 8-344-1T | 0.4 | 1.12 | 41 | 78.5 | 13 | 37 | 33.5 |
| 8-344-2T | 0.47 | 2 | 42 | 88 | 14 | 38 | 35.5 |
| 8-344-3T | 0.69 | 3.15 | 45 | 94 | 17 | 43.5 | 39 |
| 8-344-5T | 1.46 | 5.3 | 55 | 118 | 22 | 50 | 49 |
| 8-344-8T | 2.5 | 8 | 70 | 141 | 26.5 | 70.5 | 54 |
| 8-344-10T | 3.6 | 10 | 85 | 165 | 28 | 78 | 63.5 |
| 8-344-15T | 5.79 | 15 | 97 | 188 | 34 | 90 | 72 |

