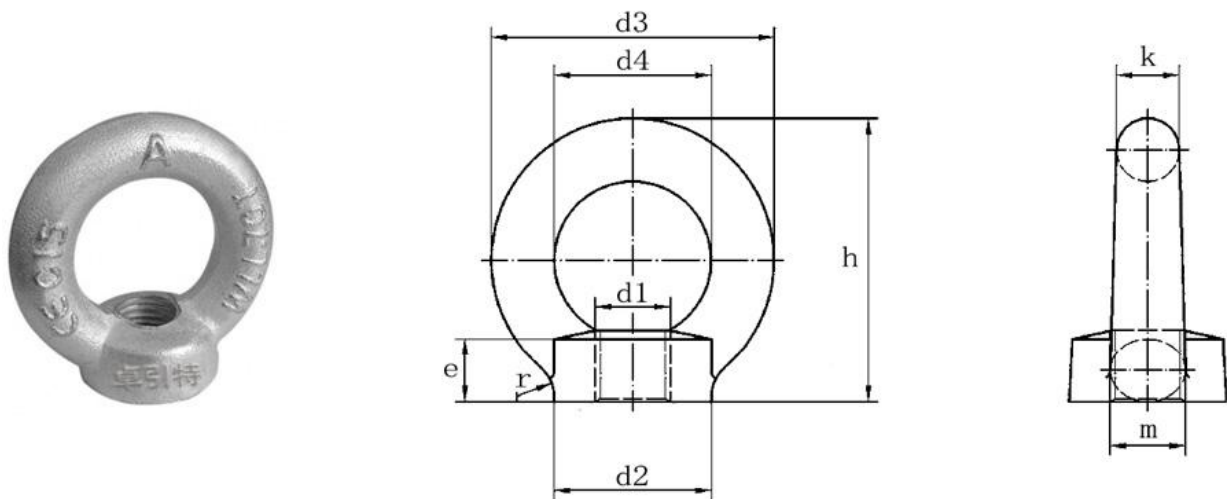
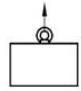
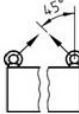



## Eye Nut

- Forged with alloy steel.
- Manufactured in accordance with DIN582
- The test load is 2 times of the working load limit, and the ultimate load is 4 times that of the working load limit.
- The machinery eye bolts must be swirled close to the support surface and do not allow the tool to be tightened.



ITEM No.	Size mm									WLL(t)			weight kg
	d1	d2	d3	d4	e	h	k	m	r				
LM-M8	8	20	36	20	8.5	36	8	10	4	0.14	0.1	0.07	0.05
LM-M10	10	25	45	25	10	45	10	12	4	0.23	0.17	0.115	0.09
LM-M12	12	30	54	30	11	53	12	14	6	0.34	0.24	0.17	0.16
LM-M16	16	35	63	35	13	62	14	16	6	0.7	0.5	0.35	0.24
LM-M20	20	40	72	40	16	71	16	19	8	1.2	0.86	0.6	0.36
LM-M24	24	50	90	50	20	90	20	24	12	1.8	1.29	0.9	0.72
LM-M30	30	65	108	60	25	109	24	28	15	3.6	2.6	1.8	1.32
LM-M36	36	75	126	70	30	128	28	32	18	5.1	3.7	2.55	2.08
LM-M42	42	85	144	80	35	147	32	38	20	7	5	3.5	3.11
LM-M48	48	100	166	90	40	168	38	46	22	8.6	6.1	4.3	5.02
LM-M56	56	110	184	100	45	187	42	50	25	11.5	8.2	5.75	6.69
LM-M64	64	120	206	110	50	208	48	58	25	16	11	8	9.3
LM-M72	72	150	260	140	60	260	60	72	35	21	15	10.5	18.5
LM-M80	80	170	296	160	70	298	68	80	35	28	20	14	27.3
LM-M100	100	190	330	180	80	330	75	88	40	38	27	19	36.4